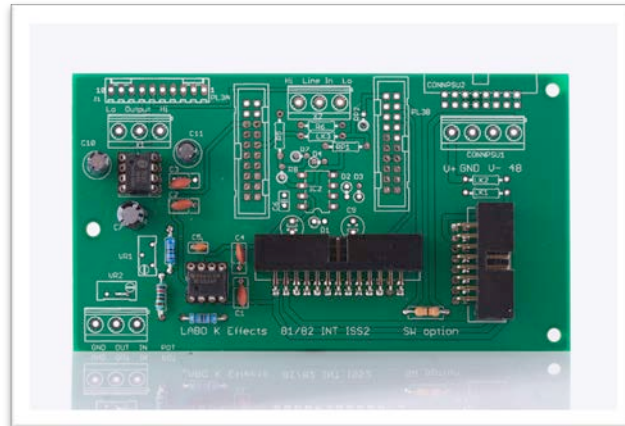


LABO ★ K EFFECTS

CONNECTION KIT FOR NEVE 8108 PREAMP+EQUALISER



CONTENTS

INTRODUCTION	3
KIT OVERVIEW	4
ASSEMBLY INSTRUCTIONS	5
NEVE 81/82 INTERFACE PARTS LIST	6
PSU1 CONNECTOR PINOUT	6
NEVE 8108 INTERFACE BOARD WIRING	7

INTRODUCTION

This kit allows to interconnect one NEVE 8108 preamp module and one equalizer module to put them in a Rack.

The kit also allows to connect output and power supply necessary for the use of the set.

One +4dB balanced output stage is fitted on the PCB.

Optional accessory

<p>Labo★K Effects Neve 81/82 PSU Kit</p> <p>Power supply +48V, 0V ,+22V ,-22V</p> <p>(Kit or PCB only)</p> <p><i>R-Core transformer not supplied</i></p>	
<p>Labo★K Effects FPSU Metalwork</p> <p>Secures the power supply to the rack.</p>	



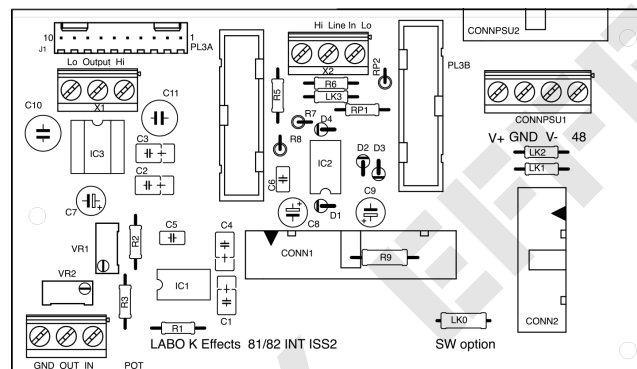
For proper operation of the unit, it is advisable to use modules in good conditions and with coupling capacitors will have been changed if necessary. The poor condition of the capacitors can greatly affect the sound quality or even cut the signal.

Similarly, it will ensure that the various switches have been cleaned using a contact cleaner spray.

KIT OVERVIEW

1 PCB for connecting:

- 1 preamp module
- 1 equalizer module
- 1 + 4dB balanced output (stage fitted on the PCB)
- Power supply
- One Level pot (not supplied)



Connectors and components.

Input and Output XLR connectors not supplied.

ASSEMBLY INSTRUCTIONS

- 1) Solder components and connectors on PCB.
- 2) Prepare interconnection wires

For preamp versions do not include the Filters section, connect the pads 4 & 10 of connector PL1 on 10712 board as shown in Figure 2.

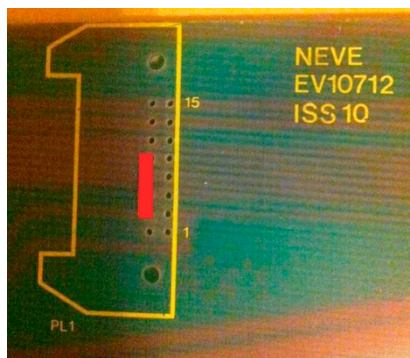
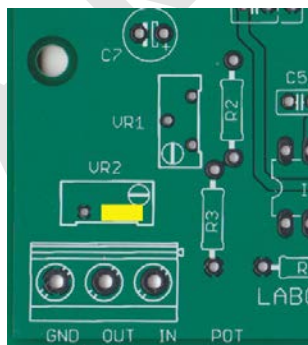


Figure 2

- 3) Bind output wire to your XLR or Stereo jack.
- 4) Bind PSU connector to +48v, 0V, +22V, -22V power supply
- 5) Bind preamp and equalizer modules ribbons to the board connectors.

If you don't want to use a master volume pot, solder a jumper as shown below.



NEVE 81/82 INTERFACE PARTS LIST

Itm Nr	Designation	Description	Qty
1	CONN1	IDC 26 connector	1
2	CONN2	IDC 16 connector	1
3	CONNPSU1	PHOENIX CONTACT SMKDSN1,5/4-5,08	1
4	LK0	0R0 resistor	1
5	R1	18K resistor	1
6	R2	680R resistor	1
7	R3	1K2 resistor	1
8	VR2	Not fitted	1
9	C1, 2, 3, 4	100n/50V capacitor	4
10	C5	22pF capacitor	1
11	C7	100µF/10V capacitor	1
12	C10, 11	10µF/50V NP capacitor	2
13	IC1	NE5534	1
14	IC3	THAT1646	1
15	Socket	DIL 08 socket for item 13, 14	2

All resistors are 1/4w metal film 1%

PSU1 CONNECTOR PINOUT

1	+48
2	-22V
3	0V
4	+22V

NEVE 8108 INTERFACE BOARD WIRING

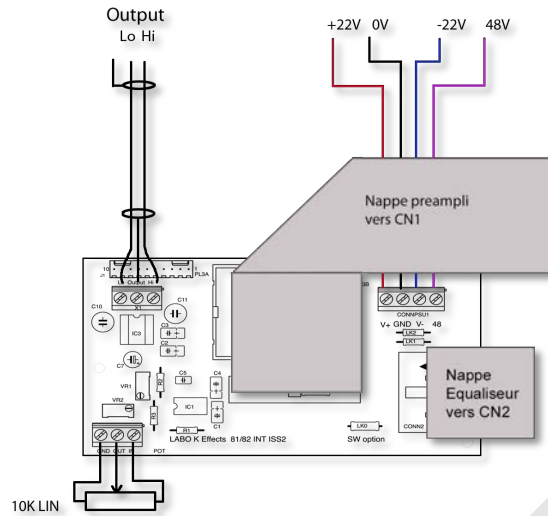


Figure 1

You can plug a 10K Lin pot (not supplied) wired on front face of rack.
(do not solder a jumper in RV2 in this case)

On the preamp module, the Filter section will engage using the « CH » switch what allows to have a bypass switch for both filters.

One have two solutions to toggle 48V.

- 1) Remove LK0 on interface board and insert a switch with 2 wires.
- 2) Modify EV10712 preamp card as indicate on Figure 2 and so use « TAPE » switch to engage 48V.

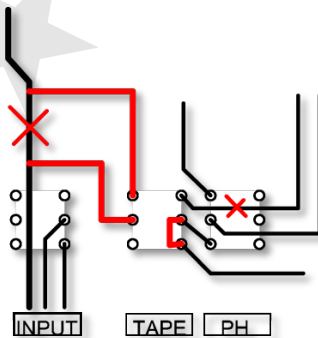


Figure 2

Cut tracks at place marked by a cross and bind points indicated by red lines.

Legal notice:

Labo★K Effect shall not be responsible and disclaims all liability for any damage (whether direct or consequential) that may result from a wrong use of the kit by the user.