

LABO ★ K EFFECTS

CONNECTION KIT FOR NEVE 81/82 EQUALISER



CONTENTS

INTRODUCTION	3
KIT OVERVIEW	4
ASSEMBLY INSTRUCTIONS	5
NEVE 81/82 EQ INTERFACE PARTS LIST	6
PSU CONNECTOR PINOUT	7
NEVE 81/82 VERSION INTERFACE BOARD WIRING	7

INTRODUCTION

This kit allows to interconnect one NEVE 81/82 series equalizer module to put it into a Rack.

The kit also allows to connect input, output and power supply necessary for the use of the set.

One +4dB balanced output stage is fitted on the PCB.

One balanced Line input stage is fitted on the PCB

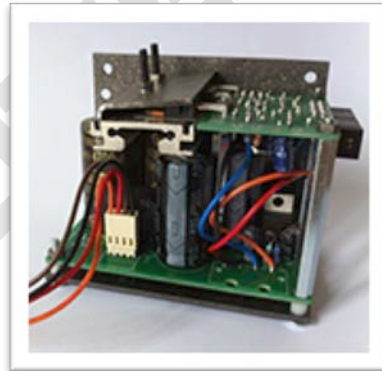
Optional accessory

Labo★K Effects Neve 81/82 EQ PSU Kit

Power supply +18V,-18V, 0V

(Kit or PCB only)

R-Core transformer not supplied



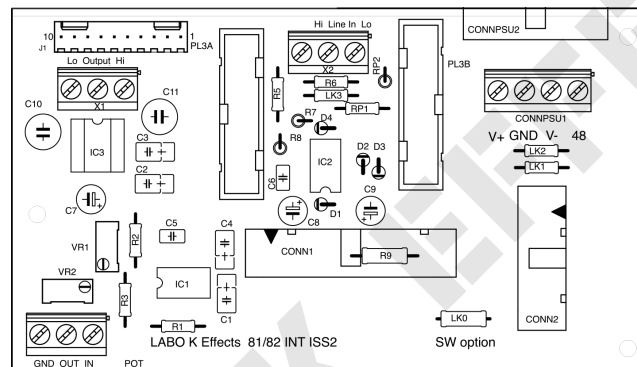
For proper operation of the unit, it is advisable to use modules in good conditions and with coupling capacitors will have been changed if necessary. The poor condition of the capacitors can greatly affect the sound quality or even cut the signal.

Similarly, it will ensure that the various switches have been cleaned using a contact cleaner spray.

KIT OVERVIEW

1 PCB for connecting:

- 1 equalizer module
- 1 balanced line input stage (stage fitted on the PCB)
- 1 + 4dB balanced output (stage fitted on the PCB)
- Power supply
- One Level pot (not supplied)



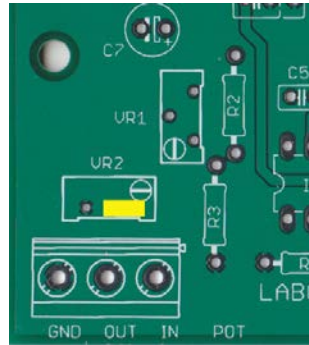
Connectors and components.

Input and Output XLR connectors not supplied.

ASSEMBLY INSTRUCTIONS

- 1) Solder components and connectors on PCB.
- 2) Prepare interconnection wires
- 3) Bind output and input wires to your XLR or Stereo jacks.
- 4) Bind PSU connector to 0V, +18V, -18V power supply
- 5) Bind equalizer module ribbons to the board connector.

If you don't want to use a master volume pot, solder a jumper as shown below.

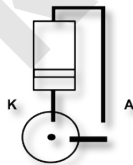


NEVE 81/82 EQ INTERFACE PARTS LIST

Art Nr	Désignation	Description	Qty
1	CONN2	IDC 16 connector	1
2	CONNPSU1	PHOENIX CONTACT SMKDSN1,5/4-5,08	1
3	LK0, LK1, LK2, RP1	0R0 resistor	4
4	R1	18K resistor	1
5	R2	680R resistor	1
6	R3	1K2 resistor	1
7	R5	7K68 resistor	1
8	R6	12K4 resistor	1
9	R7	2K43 resistor	1
10	R8	3K9 resistor	1
11	VR1, VR2	Not fitted	2
12	C1, 2, 3, 4	100n/50V capacitor	4
13	C5, 6	22pF capacitor	2
14	C7	100µF/10V capacitor	1
15	C8, 9	22µF/25V capacitor	2
16	C10, 11	10µF/50V NP capacitor	2
17	D1, 2, 3, 4	1N4148 diode	4
18	IC1, IC2	NE5534	2
19	IC3	THAT1646	1
20	Socket	DIL 08 socket for items 18, 19	3

RP2 not fitted

All resistors are 1/4w metal film 1%

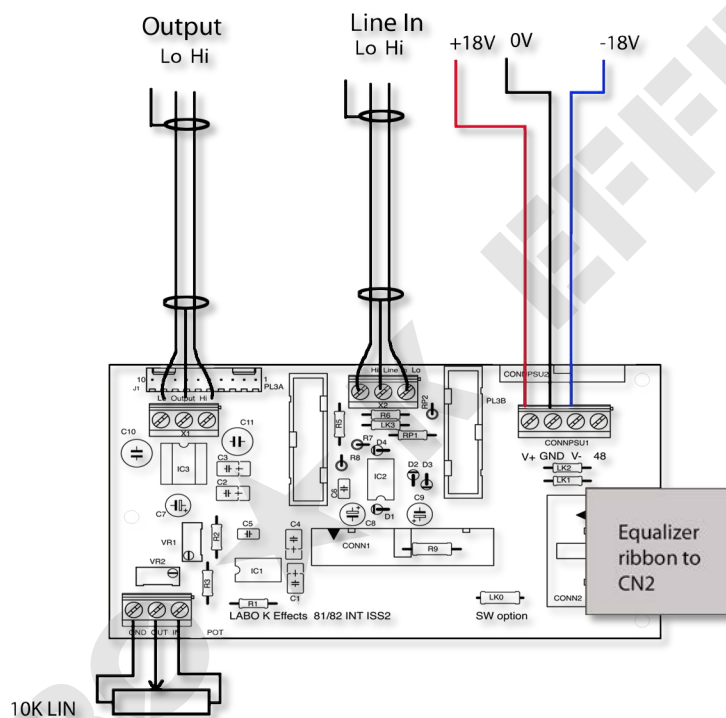


Diodes implementation :

PSU CONNECTOR PINOUT

1	NC
2	-18V
3	0V
4	+18V

NEVE 81/82 VERSION INTERFACE BOARD WIRING



You can plug a 10K Lin pot (not supplied) wired on front face of rack.
(do not solder a jumper in RV2 in this case)

Legal notice:

Labo★K Effect shall not be responsible and disclaims all liability for any damage (whether direct or consequential) that may result from a wrong use of the kit by the user.