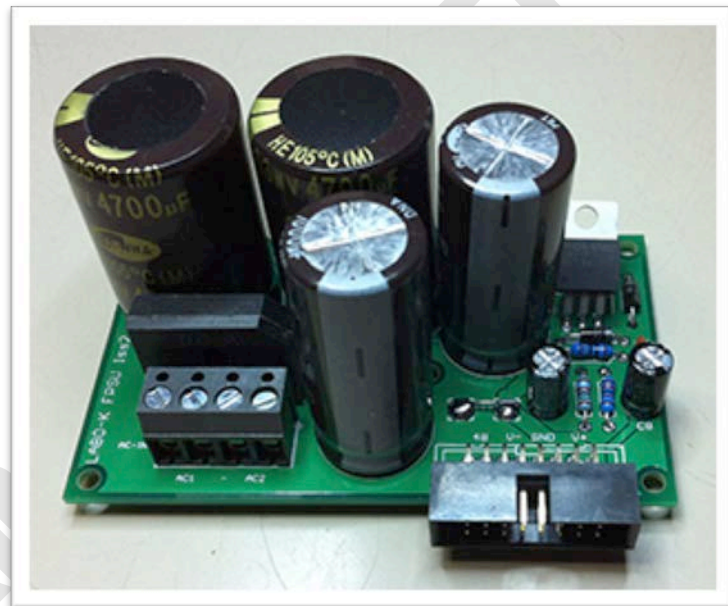


# LABO ★ K EFFECTS

POWER SUPPLY KIT FOR NEVE 81/82 MODULES



## CONTENTS

|  |          |
|--|----------|
| <b>INTRODUCTION</b>                    | <b>3</b> |
| <b>KIT OVERVIEW</b>                    | <b>4</b> |
| <b>FPSU BOARD PARTS LIST</b>           | <b>5</b> |
| <b>FPSU BOARD CONNECTORS PINOUT</b>    | <b>5</b> |
| <b>FPSU BOARD ASSEMBLY INTRUCTIONS</b> | <b>6</b> |
| <b>POWER TRANSFORMER WIRING</b>        | <b>7</b> |

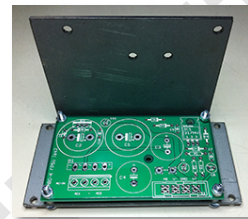
## INTRODUCTION

This kit allows to built a power supply specifically designed for Neve 81/82 series Preamp and Equalizer modules to put them in a rack.  
This Kit is designed to supply up to 4 pairs of Preamp & EQ.

### Optional accessory

#### Labo★K Effects FPSU Metalwork

Allows to secure PSU on the rack.

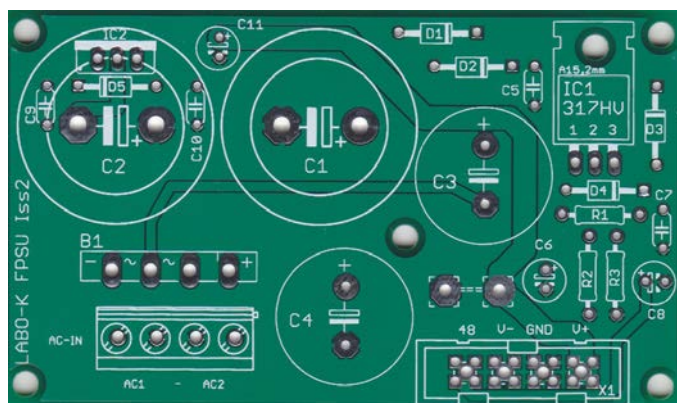


## KIT OVERVIEW

### 1 PCB for connecting:

- 1 power transformer 2x18v 50VA (not supplied)
- PSU Bus

This card provides the +/- 22V PSU and the 48V regulated phantom needed for operating the Neve 81/82 Preamp and EQ modules.



### Connectors and components.

*The 2x18V 50VA power transformer is not supplied.*

## FPSU BOARD PARTS LIST

|   |   |
|---|---|
| AC-IN      4 position bcp terminal bloc                                 |  |
| Connector X1    IDC16<br><br>One can use a 4 position bcp terminal bloc |   |
| B1  | PONT RS602  |
| D1, D2, D3, D4  | 1N4002  |
| R1  | 180R  |
| R2  | 15K   |
| R3  | 12K   |
| C1, C2  | 4700µF/63v  |
| C3, C4  | 1000µF/100v   |
| C5, C7  | 100n100v  |
| C6, C8  | 47µF/63v  |
| IC 1  | LM317HV   |

*All resistors are 1/4w metal film 1%*

## FPSU BOARD CONNECTORS PINOUT

| AC in |          |
|-------|----------|
| 1     | AC 18V 1 |
| 2     | AC 18V 1 |
| 3     | AC 18V 2 |
| 4     | AC 18V 2 |

| Bornier |      | IDC16          |
|---------|------|----------------|
| 1       | +48V | 13, 14, 15, 16 |
| 2       | -22V | 9, 10, 11, 12  |
| 3       | 0V   | 5, 6, 7, 8     |
| 4       | +22V | 1, 2, 3, 4     |

## FPSU BOARD ASSEMBLY INTRUCTIONS

1. Solder a strap on the PCB as shown in figure 1.
2. Solder components on the pcb

**Note :**

*The standard connector X1 for Rack Mount kits 81/82 series is an IDC16 connector. It can easily be replaced by a 4 position bcp terminal bloc if necessary.*

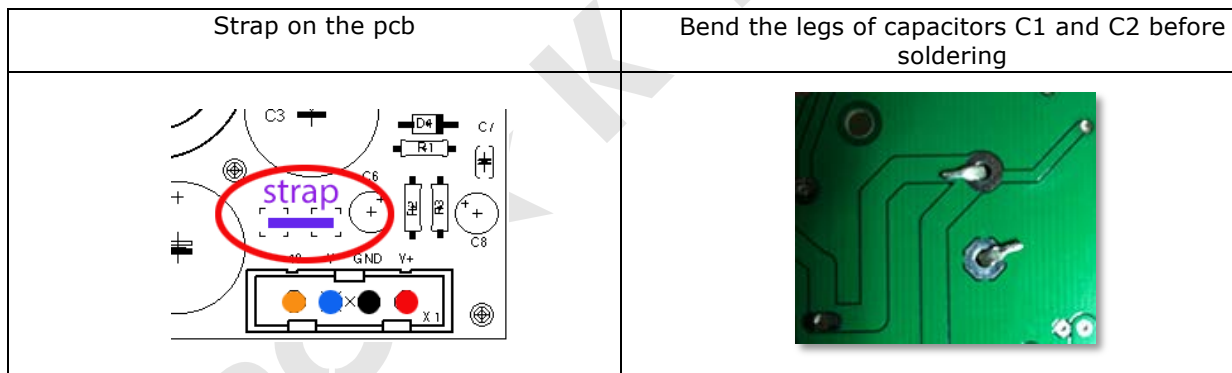
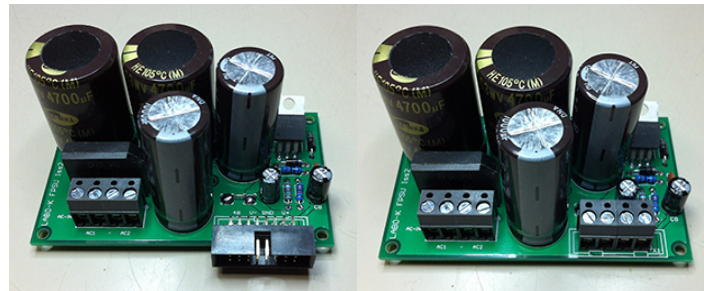
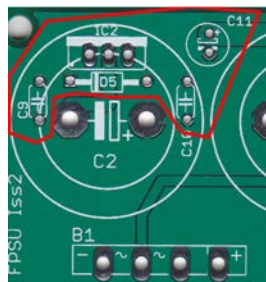


Figure 1

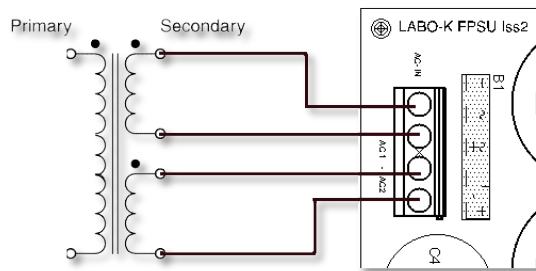
Note.

The components IC2, D5, C9, C10 and C11 are not fitted.

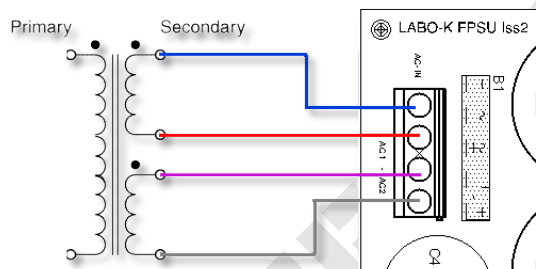


## POWER TRANSFORMER WIRING

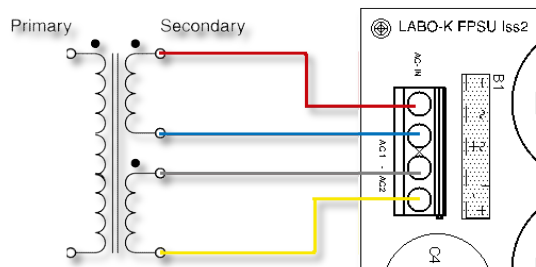
### Branchement du transformateur 2X 18V 50VA



### Couleurs du transformateur R-core de Selectronic



### Couleurs du transformateur Hammond serie 182



#### Mentions légales :

**Labo★K Effects décline toute responsabilité en ce qui concerne des dégâts directs et indirects occasionnés par une mauvaise réalisation du kit par l'utilisateur.**