

LABO ★ K EFFECTS

POWER SUPPLY KIT FOR MALOTKI V71 MODULES



CONTENTS

<u>INTRODUCTION</u>	<u>3</u>
<u>KIT OVERVIEW</u>	<u>4</u>
<u>FPSU BOARD PARTS LIST</u>	<u>5</u>
<u>FPSU BOARD CONNECTORS PINOUT</u>	<u>5</u>
<u>IINSTALLATION INSTRUCTIONS FOR TRANSFORMERS</u>	<u>6</u>
<u>CONNECTING POWER TRANSFORMERS</u>	<u>7</u>

INTRODUCTION

This kit allows a power supply specially designed for Malotki V71 preamplifier modules to be rack-mounted.

This kit is designed to power up to 2 modules.

2 transformers 30VA (not supplied) are necessary.

T1 110V or 220V (depending on the country) to 6V

T2 220V to 6V

WARNING :

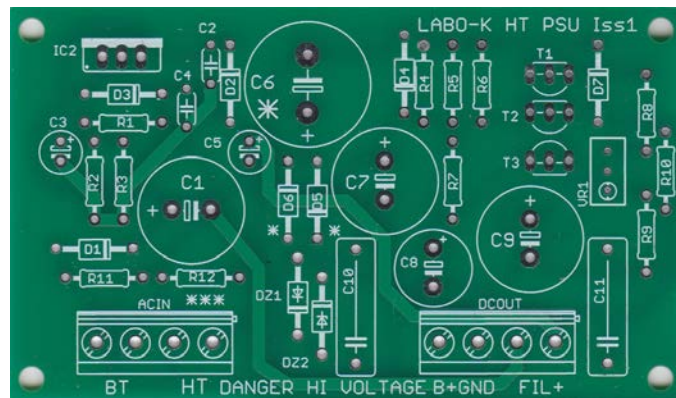
This power supply provides dangerous high voltage.!!

KIT OVERVIEW

1 PCB for connecting:

- 1 power transformer 6/220v (**not supplied**)
- PSU BUS

This card performs the rectifying and filtering of the AC voltage. It provides the adjustable +280v supply voltage necessary for the operation of the V71 preamplifier and the 6V AC for heaters of tubes.




Connectors and components.

The transformers **are not supplied**.

FPSU BOARD PARTS LIST

The components D3, R1, R2, R3, R11, R12, C1, C2, C3, C4, C5, IC2 are not fitted

ACIN /DCOUT 4 position bcp terminal blocs	
D1, D2	STRAP (component leg)
D4, D7	1N4007
D5, D6	1N4007(110v Option)
DZ1, DZ2	Zener diode 75V 0,5w
R4	270R
R5, R7	33K 1W
R6	100K
R8	120K
R9	150K
R10	10R
C6	22 μ F/450v (110V Option)
C7, C9	10 μ F/450V
C8	2,2 μ F/450V
C10, C11	100n 630V
VR1	50K
TR1, TR2, TR3	MPSA42

Unless otherwise stated, the resistors are 1/4w 1% metal film.

FPSU BOARD CONNECTORS PINOUT

AC in	
1	AC 6V
2	AC 6V
3	AC 220V
4	AC 220V

Bornier	ACOUT
1	B+ (280V)
2	GND
3	6V AC Fil
4	6V AC Fil

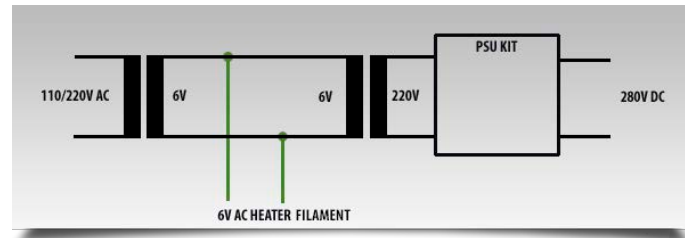
INSTALLATION INSTRUCTIONS FOR TRANSFORMERS

This power supply uses 2 transformers.

The first one transforms the mains (110V or 220V) into 6V AC voltage to supply the filaments of the tubes.

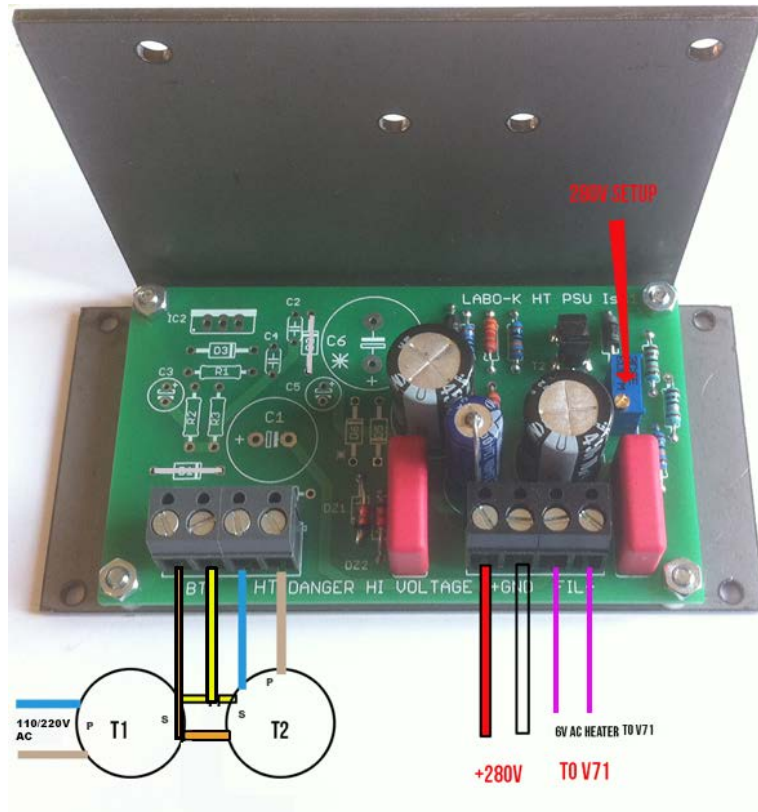
A second 220V/6V transformer is used in the opposite direction.

It transforms the 6V of the filaments into 220V AC to drive the High Voltage regulation board. This isolates the power supply from the mains.



1. Connect transformers secondaries (not supplied)
2. Connect the 6V wires to ACIN connector (BT)
3. Connect the 220V of T2 to the ACIN connector (HT).

CONNECTING POWER TRANSFORMERS



Set output B+ to 280V DC using the trimmer.

WARNING:

Voltage of 280V DC is dangerous.

Legal notice:

Labo ★ K Effect shall not be responsible and disclaims all liability for any damage (whether direct or consequential) that may result from a wrong use of the kit by the user.