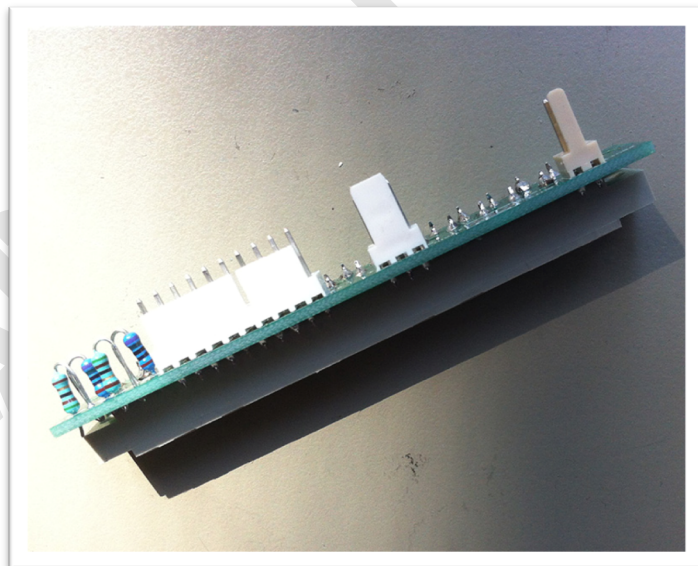
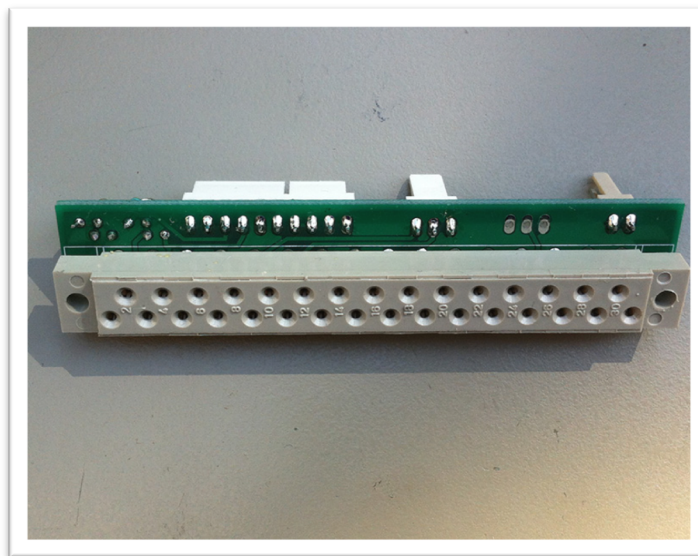


# LABO ★ K EFFECTS

## CONNEXION KIT FOR TELEFUNKEN V672 PREAMP



## CONTENTS

<b>INTRODUCTION</b>	<b>3</b>
<b>KIT OVERVIEW</b>	<b>4</b>
<b>WIRING COMPONENTS PART LIST</b>	<b>5</b>
<b>IN / OUT CONNECTOR PINOUT</b>	<b>5</b>
<b>WIRING OPTIONS</b>	<b>6</b>
<b>MOUNTING INSTRUCTIONS TOP SIDE</b>	<b>7</b>
<b>MOUNTING INSTRUCTIONS BOTTOM SIDE</b>	<b>7</b>
<b>V672 KIT WIRING</b>	<b>8</b>

## INTRODUCTION

This kit allows to interconnect a Telefunken V672 preamp module to put in a Rack. The kit allows to connect input, output and power supply necessary for the use of the set.

### Optional accessories

<p><b>Labo★K Effects Vintage PSU Kit</b></p> <p>Regulated PSU +48V, +24V (Kit or PCB + Metalwork only)</p> <p><u>Power transformer not supplied.</u></p> <p><b>Vintage PSU PCB+METALWORK</b></p> <p>Allows to fix the pcbs and the radiator of the power supply. The compact unit can thus be easily fixed in the rack.</p>	
<p><b>Labo★K Effects input/output kit</b></p> <p>Allows to connect the input and output. Also allows the installation of a phase inverter, a pad and a 48V switch Also provides a high impedance instrument input</p>	
<p><b>Labo★K Effects V672 Gain Selector Kit</b></p> <p>A high quality 12 position selector switch allows you to choose the preamp gain.</p> <p>The 12 gain values are:</p> <p>0dB, 5dB, 10dB, 15dB, 20dB 22dB, 24dB, 26dB, 28dB, 30dB, 32dB, 34dB</p>	

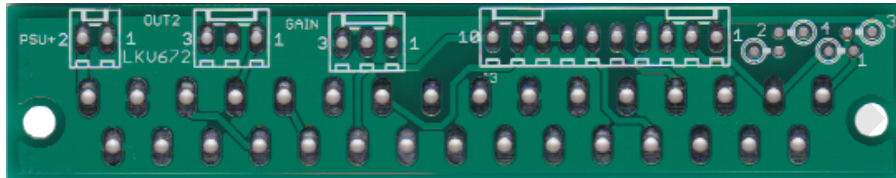


For proper operation of the unit, it is advisable to use modules in good conditions and with coupling capacitors that will have been replaced if necessary.




The poor condition of the capacitors can greatly affect the sound quality or even cut the signal.

## KIT OVERVIEW

- **1 Interconnect board PCB 2 layers plated pads for connecting:**
  - - 1 input
    - 1 output
    - 1 PSU

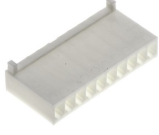





- **Connectors and components**  
XLR Connectors and potentiometer not supplied.

Connector 31 way	DIN 41617	
Connector Inout	Molex 22-27-2101	
Connector Gain	Molex 22-27-2031	
Connector PSU	Molex 22-27-2021	
R1, R2		750R
R3, R4		51R

*All resistors are 1/4w metal film 1%*

## WIRING COMPONENTS PART LIST

Connecteur In / out	Molex 22-01-210	
Connecteur Gain	Molex 22-01-3037	
Connecteur PSU	Molex 22-01-3027	
13 crimp terminals	Molex 08-50-0005	

*All resistors are 1/4w metal film 1%*

## IN / OUT CONNECTOR PINOUT

1	Impedance switch
2	Impedance switch
3	Impedance switch
4	Impedance switch
5	Input Hi
6	Input Lo
7	Input Screen
8	Output Screen
9	Output Hi
10	Output Lo

### GAIN

1	Pot 3
2	Pot 2
3	Pot screen

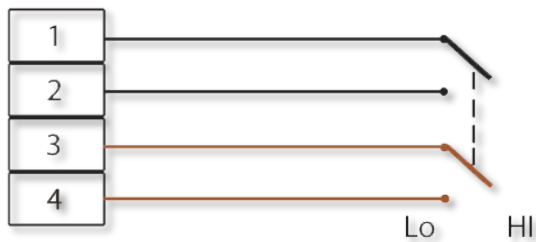
### PSU

1	GND
2	+24V

## WIRING OPTIONS

### HI/LO input gain selector

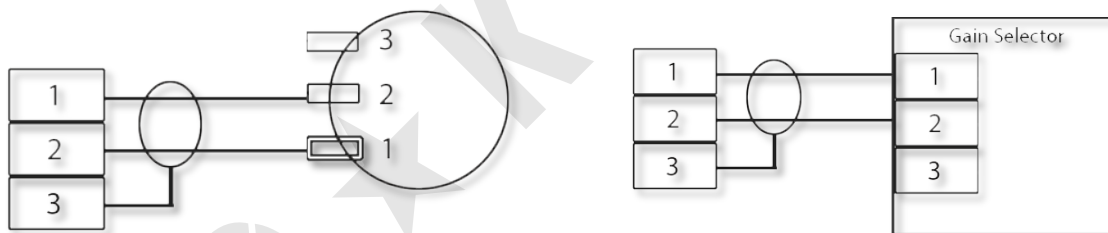
Using a DPDT switch (not supplied) an input impedance selector can be provided depending on the source connected to the input.



### Gain Selector or potentiometer.

It will be necessary to connect a 500K linear potentiometer (not supplied) to have a gain adjustment.

This potentiometer can be replaced by a step gain selector.



Potentiometer

Gain selector

### 2nd output

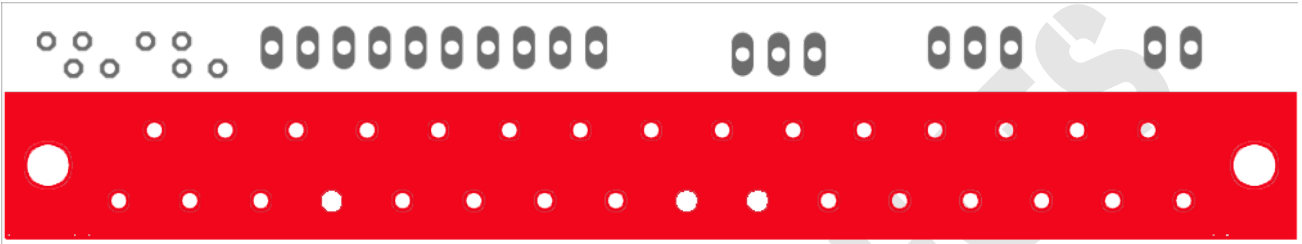
It is possible to have a 2nd balanced output via an Out2 connector (not supplied).

#### Out 2

1	Out 2 Hi
2	Out 2 Lo
3	GND

## MOUNTING INSTRUCTIONS TOP SIDE

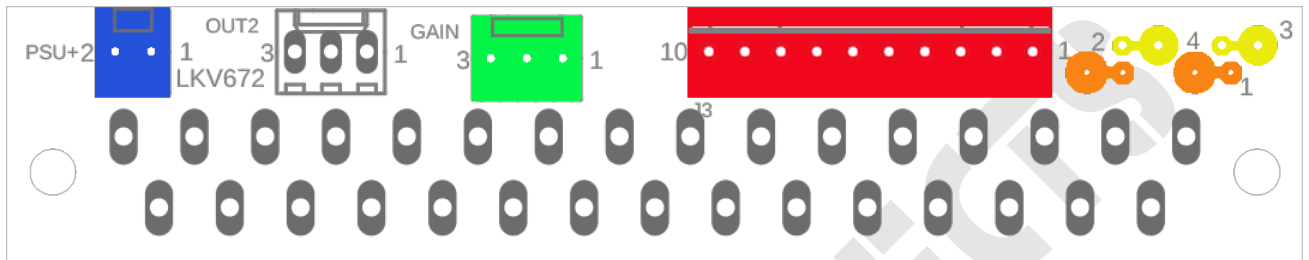
	Connector 41612	X1
--	-----------------	----



Note		

## MOUNTING INSTRUCTIONS BOTTOM SIDE

	Connector KK10	In/out
	Connector KK3	Gain
	Connector KK2	PSU
	Resistors 750R	R1, R2
	Resistors 51R	R3, R4

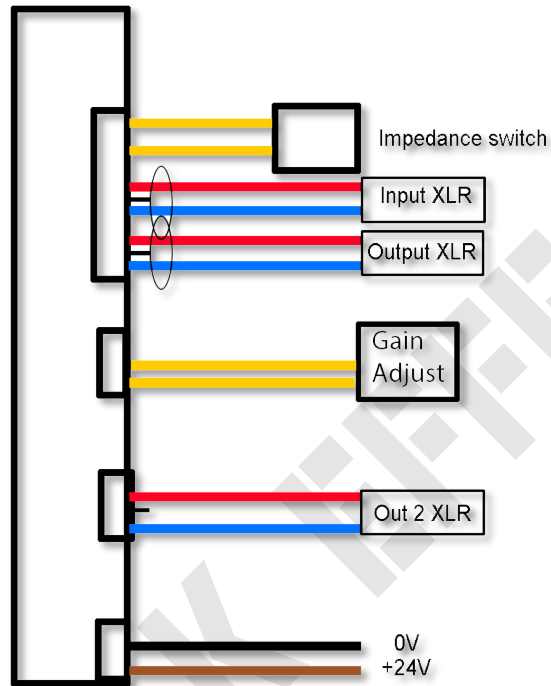


Note		
750R		
51R		
The connector Out2 can be used with some V672 version To add a second output		

## V672 KIT WIRING



V672 interface Kit



**Legal notice:**

**Labo ★ K Effects shall not be responsible and disclaims all liability for any damage (whether direct or consequential) that may result from a wrong use of the kit by the user.**